



Central Minnesota Youth Orchestra

Audition Guidelines

Register for auditions at www.cmyo.org

Welcome to the Central Minnesota Youth Orchestra!

We will go through a few of the details for your audition with CMYO. If you have additional questions, you may contact us via email at parents@cmyo.org

Auditions help the directors find the ensemble that will match the student's current skills from one of our four ensembles. To audition for CMYO, students will register online, record a video, and submit their audition online.

AUDITION PREPARATION

1. Register online for an audition and check CMYO's website for deadlines!
2. Read through the audition packet to find which ensemble seems to best fit your child. Select only one.
3. Practice! 😊
4. Record your audition video or audio and submit it online or meet in person for an audition
5. Request an upload link from parents@cmyo.org, label your name, and upload the audio or video file.

WHAT DO I NEED TO PREPARE FOR MY AUDITION?

1. Scales
2. Choose a solo piece that represents your ability
3. Music Excerpt (if provided)

I AM NEW TO THE PROGRAM. DO I NEED TO AUDITION?

Yes, all students will go through a placement audition. This helps both the family and the directors to fit the right skill and ability with the student. A student can audition after a concert cycle has been completed.

I AM ALREADY A MEMBER; DO I NEED TO RE-AUDITION?

No, you do not need to re-audition if you are planning on staying in the same ensemble. If you would like to try for another ensemble, it is required to re-audition for the next ensemble.

DO YOU HAVE A STUDENT HANDBOOK THAT GIVES US AN OVERVIEW WITH ALL THE DETAILS ABOUT THE PROGRAM?

Yes, it will give you everything from policies, forms to contact info and concert dress code. You can download it from the website or ask for a digital copy from the parents@cmyo.org

Central Minnesota Youth Orchestra Ensembles

8/2/2021

Prelude

Prelude is the first ensemble experience for students who are starting out as musicians. Students will work through helpful approaches to playing their instrument in an ensemble experience. In addition, students will see improvements in their sight-reading, rhythm and ensemble playing skills. This is usually a non-performing ensemble.

Cadenza

Cadenza offers students who have been playing for more than a year, the opportunity to start performing in an ensemble setting. Students will experience playing melody and harmony, learn about different key and time signatures, understand the different roles within the orchestra setting, and introduce rehearsal and concert etiquette. Music selections are used to cultivate these concepts in a fun environment. Prelude students are invited to also join the Cadenza if the director sees a student is transitioning well. There is no additional cost to join both ensembles.

Intermezzo

Intermezzo bridges between Cadenza and Encore by increasing expectations between learning the roles of performing in an ensemble and enhancing the student's skill level. Further development and exploration of differing key signatures, more complex melodies and harmonies, vibrato, shifting, and bow articulations.

Encore

Encore is the advanced level ensemble that has reached a skill level that is more intense with preparation and performance. Students will use critical thinking, leadership skills, and a broad understanding of musical styles. Students should consider taking private lessons at this level to help continue growth in their skills.

Audition Process

All auditions will review the students by their intonation, keeping tempo, tone, dynamics, and articulation. Each level orchestra will have different proficiency requirements to ensure best fit for the student. All students may re-audition later in the year if they wish to try for another level. Re-auditions are considered between concert cycles.

The awarding of the audition will be determined by the director of each ensemble and a panel of instructors. With questions regarding which ensemble would best fit the student's current skill level, please contact the instructors for more information.

Though not required to participate in CMYO, it is highly recommended to take lessons with a private instructor.

CADENZA AUDITION

Scale
Music Selection
(student's choice)

VIOLIN
VIOLA
CELLO
BASS

G Major

CADENZA - VIOLIN

0 1 2 3 0 1 2 3 3 2 1 4 3 2 1 0

0 2 3 0 3 3 4 2 0

C Major

CADENZA - VIOLA

0 1 2 3 0 1 2 3 2 1 4 3 2 1 0



0 2 0 3 4 2 0



C Major Scale

0 1 3 4 0 1 3 4 4 3 1 0 4 3 1 0

Musical staff for the C Major Scale in bass clef. The staff contains 16 notes: C2, C3, D3, E3, F3, G3, A3, B3, C4, B3, A3, G3, F3, E3, D3, C3. Fingerings are indicated by numbers 0-4 above the notes. Slurs are placed under the notes D3-E3, F3-G3, and A3-B3. A double bar line is at the end of the staff.

I

0 3 0 4 4 0 3 0

Musical staff for the C Major Scale in bass clef. The staff contains 8 notes: C2, C3, D3, E3, F3, G3, A3, C3. Fingerings are indicated by numbers 0-4 above the notes. A double bar line is at the end of the staff.

I

CADENZA - CELLO

2

E Major Scale**CADENZA - BASS**

Musical notation for the E Major Scale in bass clef. The scale is written on a five-line staff with a key signature of one sharp (F#) and a common time signature. The notes are: E2 (open), F#2 (1), G#2 (4), A2 (0), B2 (1), C#3 (4), D3 (1), E3 (4), F#3 (1), G#3 (2), A3 (2), B3 (1), C#4 (4), D4 (1), E4 (0), F#4 (4), G#4 (1), A4 (0). Fingerings are indicated by numbers 0-4 above the notes. A slur covers the notes from the first C#3 to the first A3, with a '1/2' below the staff. Another slur covers the notes from the first B3 to the first C#4, also with a '1/2' below the staff. A final slur covers the notes from the first E4 to the first G#4, with an 'I' below the staff.

Musical notation for the Cadenza in bass clef. The cadenza is written on a five-line staff with a key signature of one sharp (F#) and a common time signature. The notes are: E2 (open), F#2 (4), G#2 (1), A2 (1), B2 (1), C#3 (1), D3 (4), E3 (0). The notation ends with a double bar line.

INTERMEZZO AUDITION

Scale
Music Selection
(student's choice)

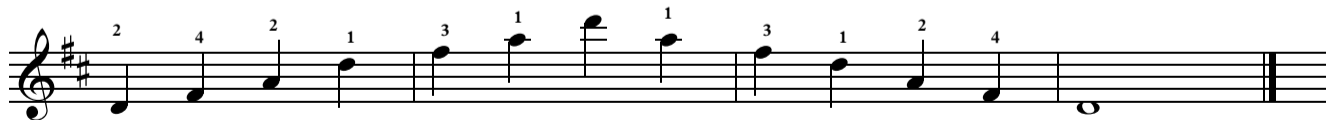
VIOLIN
VIOLA
CELLO
BASS

INTERMEZZO - VIOLIN

D Major (*3rd position*)



III



C Major

INTERMEZZO - VIOLA

0 1 2 3 0 1 2 3 0 1 2 3 0 1 2 1

4 3 2 1 4 3 2 1 4 3 2 1 0

0 2 0 3 1 3 2 3 1 3 4 2 0

The image shows three staves of musical notation for a violin piece. Each staff begins with a treble clef and a key signature of one sharp (F#). The music consists of quarter notes and eighth notes. Fingerings are indicated by numbers 0-4 above the notes. The first staff has 16 notes, the second has 13 notes, and the third has 13 notes, ending with a double bar line. The final note of the third staff is a whole note chord (F# and C).

INTERMEZZO - CELLO

G Major Scale

The musical score for the G Major Scale on Cello is presented in three staves, each with a bass clef and a key signature of one sharp (F#). The notes and fingerings are as follows:

Staff 1: 0 1 3 4 | 0 1 3 4 | 0 1 2 4 - 1 | 3 4 3

Staff 2: 1 - 4 | 2 1 | 0 4 3 | 1 0 4 3 | 1 0

Staff 3: 0 1 4 2 - 1 x 3 2 3 x 1 - 2 4 1 0

Positions are indicated by Roman numerals: I (first position) is used for the first two staves, and IV (fourth position) is used for the first staff. The second staff is in first position, and the third staff is in second position (II), fifth position (V), and second position (II).

INTERMEZZO - BASS

E Major Scale

0 1 4 0 1 4 - 2 4 - 1 - 2 4 - 1 4 - 2 4 2 -

I III II_{1/2} III II_{1/2} III_{1/2}

The first line of the E Major Scale in bass clef. It starts with a treble clef and a key signature of three sharps (F#, C#, G#). The notes are E2, F#2, G#2, A2, B2, C#3, D3, E3. Fingerings are indicated by numbers 0-4. Slurs are placed over the notes G#2-A2, B2-C#3, D3-E3, and F#3-G#3. The fret positions are labeled as I, III, II_{1/2}, III, II_{1/2}, and III_{1/2}.

4 1 - 4 2 - 1 - 4 2 - 4 1 0 4 1 0

II_{1/2} III II_{1/2} III I

The second line of the E Major Scale in bass clef. It continues from the first line. Notes are F#3, G#3, A3, B3, C#4, D4, E4, F#4, G#4, A4, B4, C#5, D5, E5. Fingerings are indicated by numbers 0-4. Slurs are placed over the notes F#3-G#3, A3-B3, C#4-D4, and E4-F#4. The fret positions are labeled as II_{1/2}, III, II_{1/2}, III, and I.

The third line of the E Major Scale in bass clef. It continues from the second line. Notes are F#4, G#4, A4, B4, C#5, D5, E5, F#5, G#5, A5, B5, C#6, D6, E6. The fret positions are labeled as II_{1/2}, III, II_{1/2}, III, and I.

ENCORE AUDITION

Scale
Music Selection
(student's choice)
Excerpt

VIOLIN
VIOLA
CELLO
BASS

G Major

Quarter Note = 80

ENCORE

Violin

The first system of the G Major section consists of a single staff in treble clef with a key signature of one sharp (F#) and a common time signature (C). The music begins with a quarter rest, followed by a sequence of eighth notes: G4, A4, B4, C5, B4, A4, G4. This is followed by a quarter rest, then a sequence of eighth notes: G4, A4, B4, C5, B4, A4, G4. The system concludes with a sequence of eighth notes: G4, A4, B4, C5, B4, A4, G4, with a finger number '1' above the final G4.

The second system of the G Major section continues on a single staff in treble clef with a key signature of one sharp (F#) and a common time signature (C). It begins with a sequence of eighth notes: G4, A4, B4, C5, B4, A4, G4, with a finger number '2' above the final G4. This is followed by a quarter rest, then a sequence of eighth notes: G4, A4, B4, C5, B4, A4, G4. The system concludes with a sequence of eighth notes: G4, A4, B4, C5, B4, A4, G4, with a finger number '2' above the final G4.

d minor

Violin

The first system of the d minor section consists of a single staff in treble clef with a key signature of two flats (Bb, Eb) and a common time signature (C). The music begins with a quarter rest, followed by a sequence of eighth notes: D4, E4, F4, G4, F4, E4, D4, with a finger number '2' above the final D4. This is followed by a quarter rest, then a sequence of eighth notes: D4, E4, F4, G4, F4, E4, D4, with a finger number '1' above the final D4. The system concludes with a sequence of eighth notes: D4, E4, F4, G4, F4, E4, D4, with a finger number '1' above the final D4.

The second system of the d minor section consists of a single staff in treble clef with a key signature of two flats (Bb, Eb) and a common time signature (C). It begins with a sequence of eighth notes: D4, E4, F4, G4, F4, E4, D4, with a finger number '2' above the final D4. This is followed by a quarter rest, then a sequence of eighth notes: D4, E4, F4, G4, F4, E4, D4. The system concludes with a double bar line and repeat dots.

Excerpt #1

ENCORE - VIOLIN

Winter: 4th movement by Antonio Vivaldi



Tip: Listen to a recording of the piece. Check key signature. *f*



Excerpt #2



C major scale

ENCORE - VIOLA

Winter: 4th movement by Antonio Vivaldi

Tip: Listen to recording. Check key signature.

Excerpt #1

55

J

58

61

Excerpt #2

91

ENCORE - CELLO

C Major



Alternate bowing



Excerpt #1

ENCORE - CELLO

Winter: 4th movement by Antonio Vivaldi

30



Tip: Listen to recording. Check key signature.

59



61



Excerpt #2

85 **P** Tutti *Sin' il ghiaccio si rompe, e si disserra;*



92 Solo



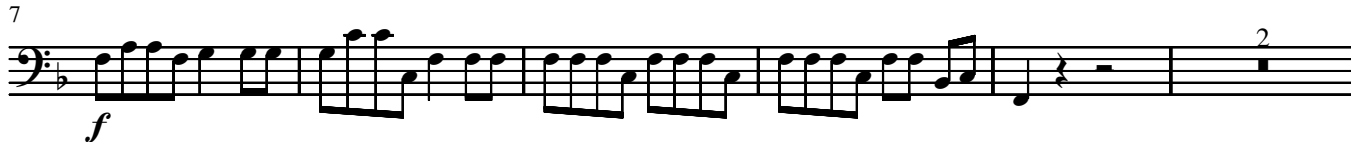
ENCORE - BASS



Excerpt #1

Tip: Listen to recording. Check key signature. Winter: 4th Movement by Antonio Vivaldi

Allegro



Excerpt #2

La caccia

I cacciatori alla nov'alba à caccia Con corni, Schioppi, e canni escono fuore

Allegro



13

